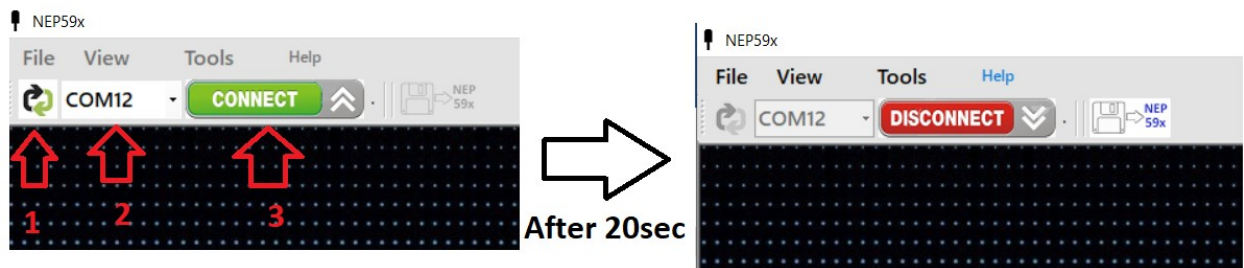
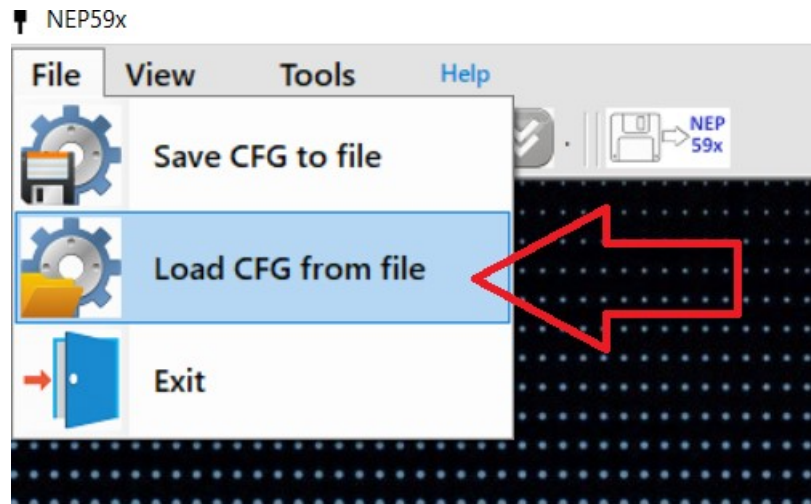


NEP595- How to upload configuration to the NEP595 logger.

1. Turn OFF the NEP595 power switch and make sure that the battery is connected.
2. Connect the NEP595 device to the PC via the provided USB cable and turn ON power switch.
3. Download ([Click here](#)) and run the NEP595 configuration app.
4. Select the correct COM port for the connected NEP595 device and press “Connect”. Wait until the configuration read is completed.



5. Go to top left menu “File”
then click “Load CFG from
FILE”



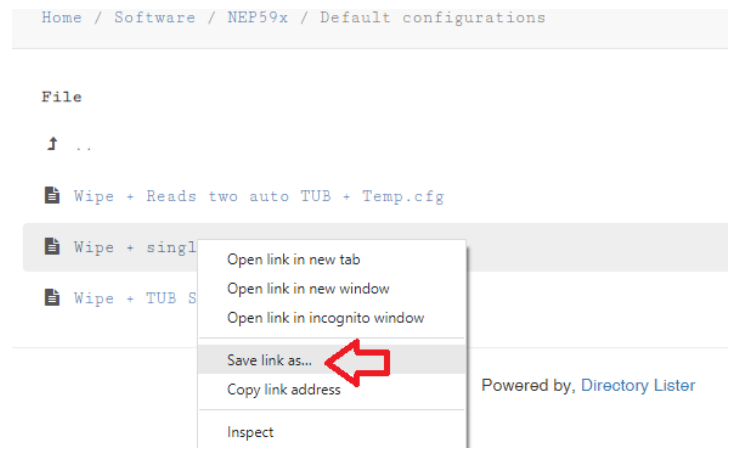
6. Select the CFG file from your computer location and press “Open”.

NEP595- How to upload configuration to the NEP595 logger.

You can download the NEP595 default CFG files from this location.

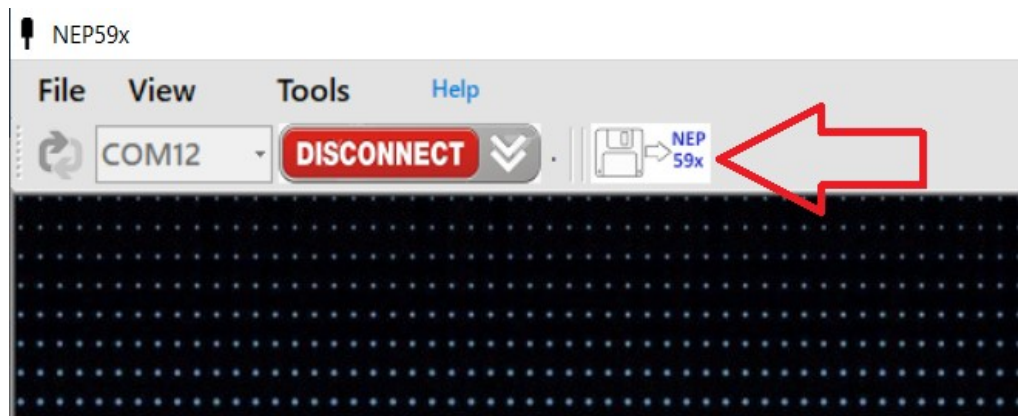
<http://download.observator.com/files/?dir=Software/NEP59x/Default%20configurations>

Press right click and press “Save link as” to download.



7. “Press saves to device “ button to send the newly loaded CFG the device. Wait until the CFG saving process to complete.

Wait for the process complete.



8. Make sure to test the newly uploaded configuration prior to deployment.